

For personal use only

# 2007/8 Year of achievement.

2007/8 Annual General Meeting  
November 2008.



**Kalgoorlie-Boulder Resources Ltd**

*Financial Strength, Local  
Knowledge, Committed Team*

# Forward Looking Statement

The material used in this presentation is intended to be a summary of selected geological data, current and proposed activities, as well as resource estimates based on information available to Kalgoorlie Boulder Resources at the time.

It does not include all available information and should not be used in isolation as a basis to invest in Kalgoorlie Boulder Resources.

This presentation may include information and graphics relating to a conceptual mining study, completed independent resource estimate and a scoping study which is in progress and includes “*forward looking statements*” which include, without limitation, estimates of gold production based on mineral resources that are currently being evaluated.

While the Company has a reasonable basis on which to express these estimates, any forward looking statement is subject to risk.

Risks include, without limitation: gold metal prices, foreign exchange rate movements, project funding capacity and estimates of future capital and operating costs.

The Company does not undertake to release publicly any revisions to forward looking statements included in this presentation to reflect events or results after the date of this presentation, except as may be required under applicable securities.

Any potential investor should refer to the reports ASX releases and statutory reports before considering investing in the company and seek independent advice.

## This year's highlights

- **Norseman Project**

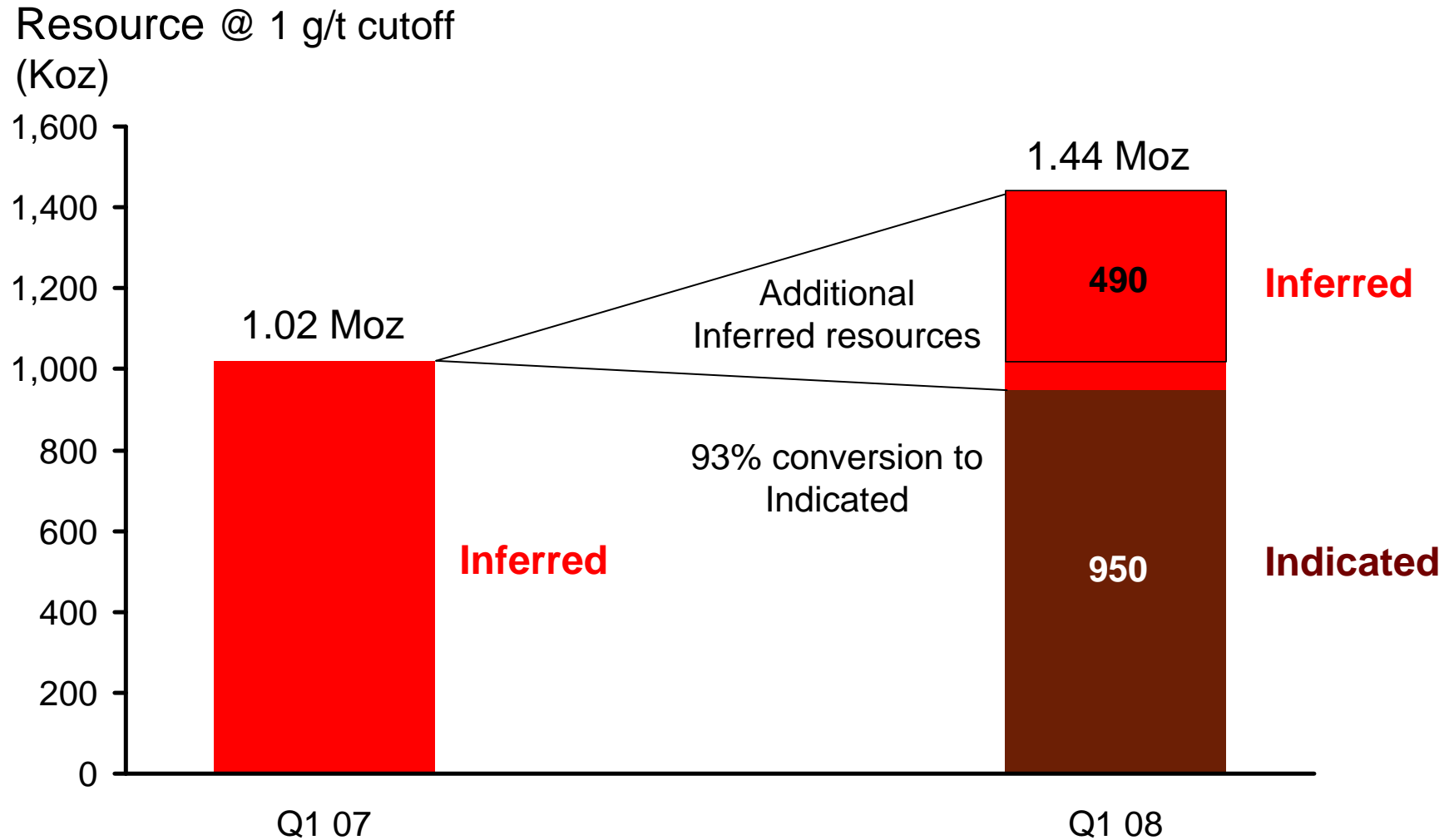
- **Major Resource upgrade to 1.44 Mozs from 1.0 Mozs.**
- **Scoping study indicates significant value in mining project.**
- **Geophysics adds new, untested exploration targets to inventory.**

- **Clinker Hill**

- **Geophysics interprets sulphide exploration targets for drilling.**
- **Diamond drilling locates veins and blebs of magmatic Nickel sulphide.**

# Norseman Project - Since 2007 KBRL has rapidly upgraded and increased the resource base.

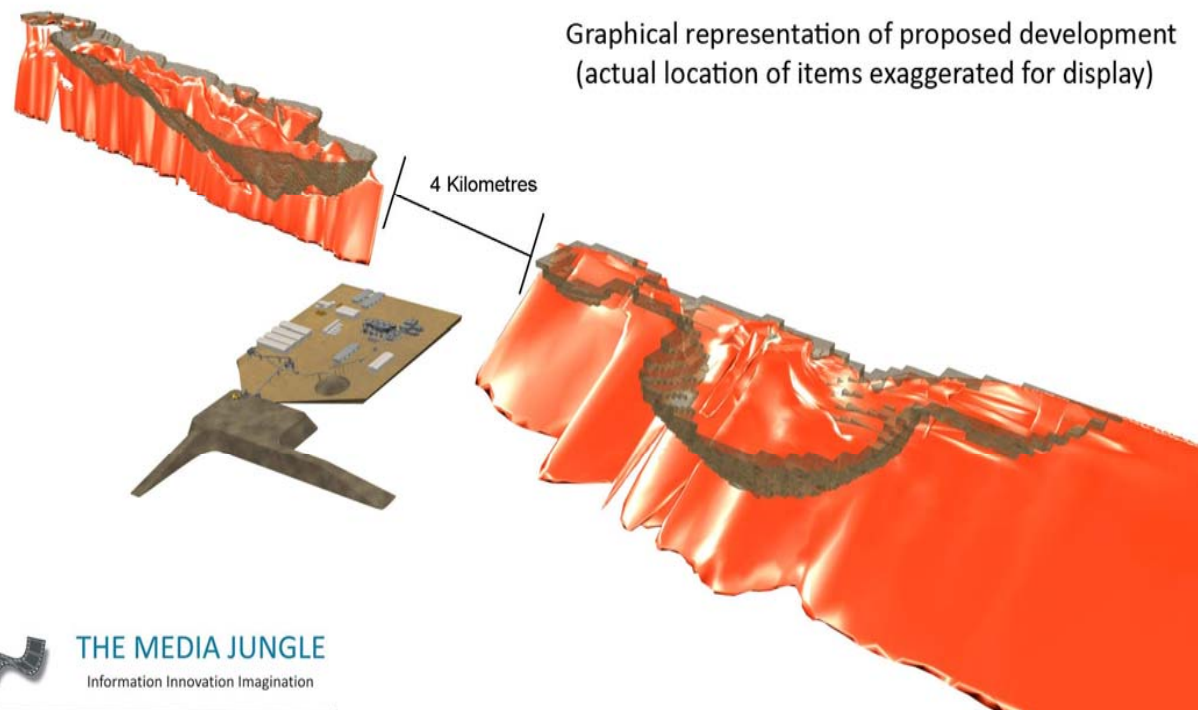
For personal use only



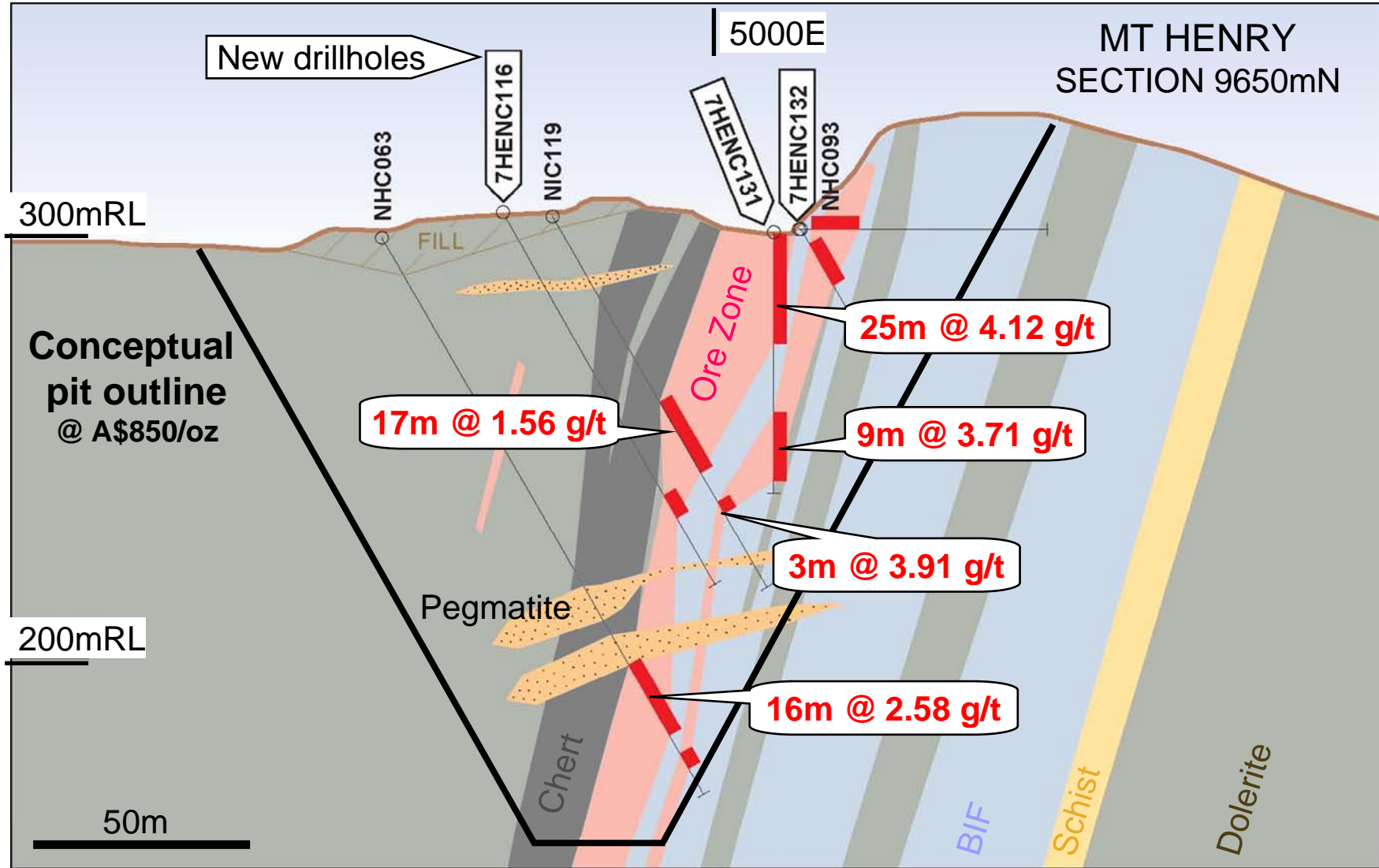
# Scoping Study

Scoping study shows a potential cash surplus of \$84 million at A\$987oz

Gold Price – Adopted	A\$987
Mine Life	7Years
Average IRR (Internal rate of Return)	40%
Capital Costs	A\$75 Million
Operating Cost	A\$143 Million
Net Present Value (NPV) @ A\$1200	A\$174 Million

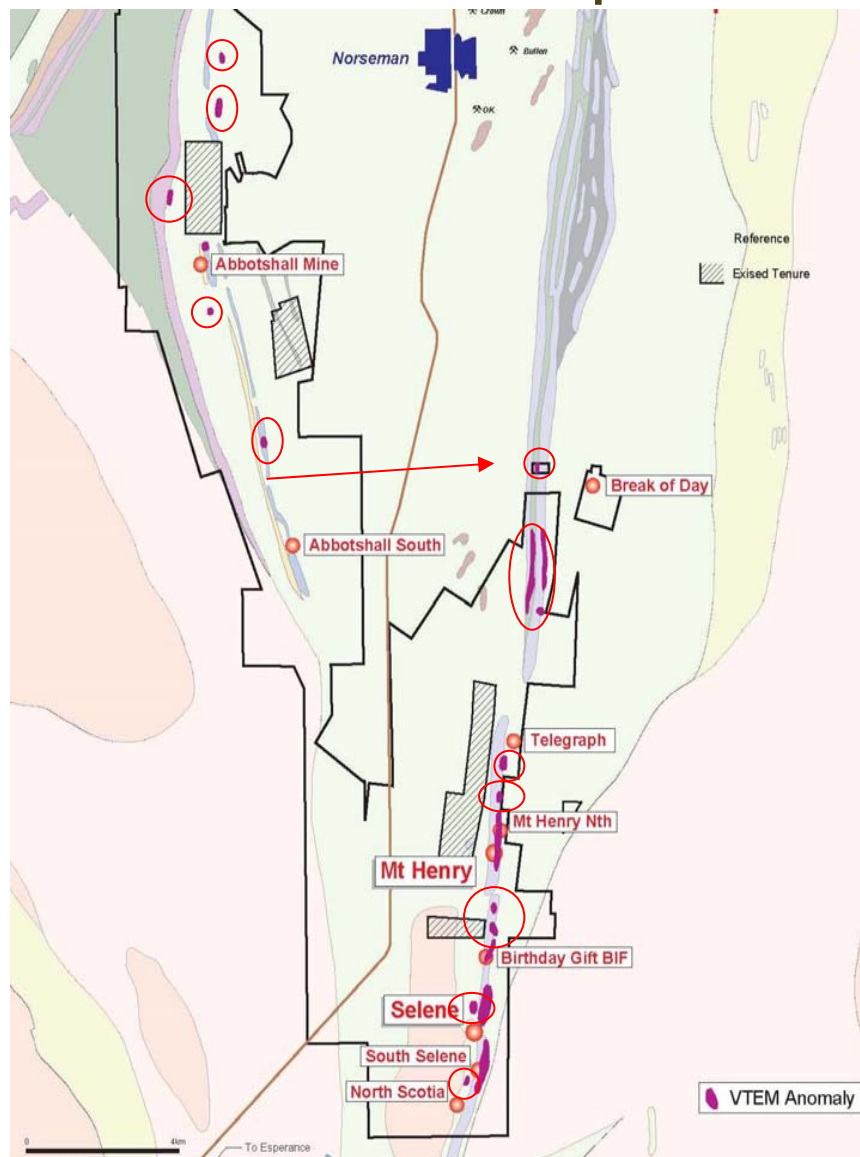


# Most recent intersections confirming a wide, steeply dipping ore body...



For personal use only

# VTEM indicates several new exploration targets.



# Clinker Hill project – Diamond Drilling

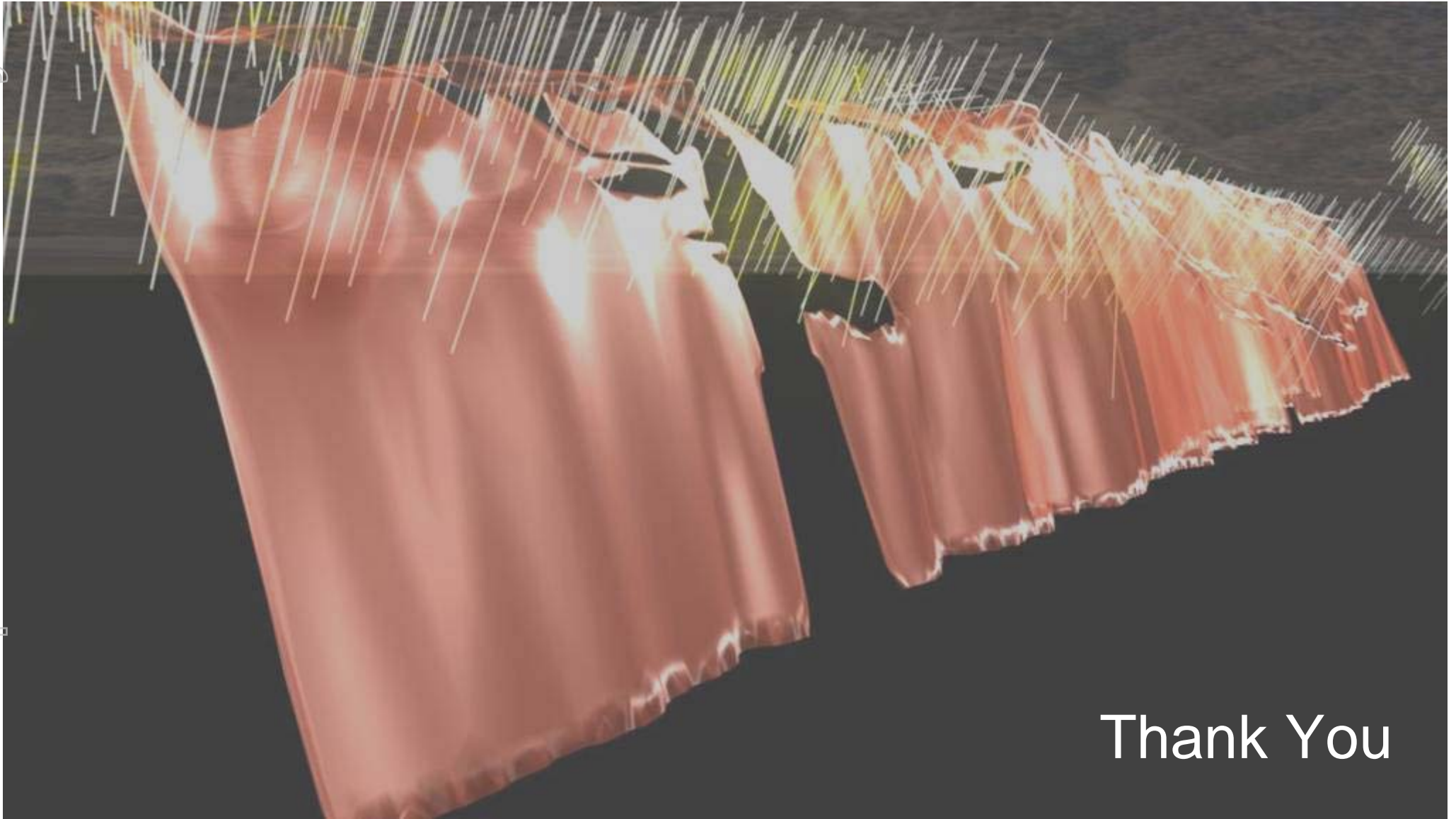


Nickel vein assaying  
up to 3.3% Ni

Diamond drilling July 2008



For personal use only



Thank You